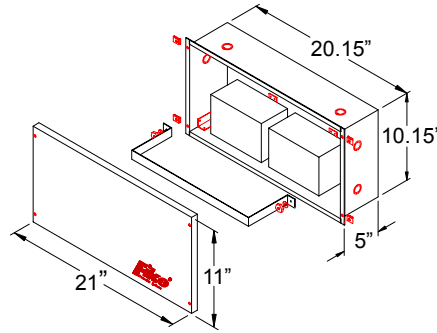


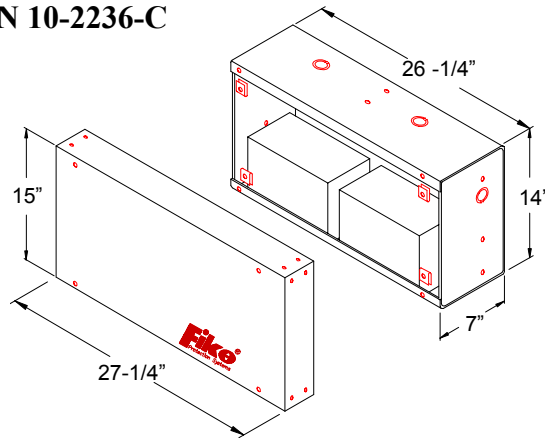
3.5 33AH BATTERY ASSEMBLY P/N 10-2154-C

This battery assembly includes a set of 33AH batteries with enclosure.



3.6 65AH BATTERY ASSEMBLY P/N 10-2236-C

This battery assembly includes a set of 65AH batteries with enclosure.



3.7 ANALOG PHOTOELECTRIC SENSOR P/N 63-1021

The photoelectric sensor offers a unique chamber design which provides better response to a wider range of applications. These intelligent sensors use an interrupt-driven intelligent protocol to increase responsiveness and reliability. These sensors use a dual point calibration routine to increase accuracy of sensor readings and use non-volatile RAM to store pertinent operating parameters.



3.8 ANALOG IONIZATION SENSOR P/N 67-1032

The low profile analog sensor uses a interrupt-driven digital protocol to ensure fast reliable communications. These sensors use non-volatile RAM to maintain important operating parameters.



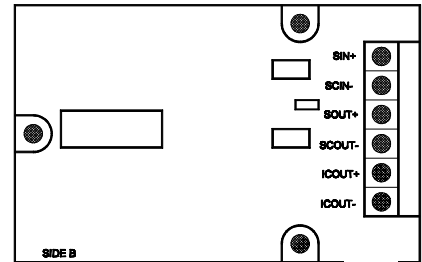
3.9 ANALOG THERMAL SENSOR P/N 60-1028

The low profile analog sensor uses an interrupt-driven digital protocol to ensure fast reliable communications. The alarm threshold for the sensor is adjustable at the control panel. These sensors use non-volatile RAM to maintain important operating parameters.



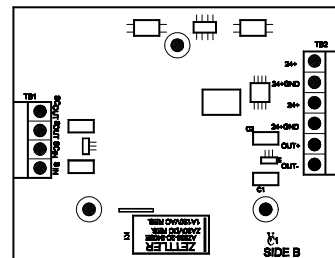
3.10 FAST RESPONSE CONTACT MODULE, (FRCM) P/N 55-019, 55-020

The Fast Response Contact Module (FRCM) is used to monitor the status of dry contacts for a wide range of applications. The module uses an interrupt driven digital protocol to ensure reliable operation. FRCM's come in two different styles depending on the application.



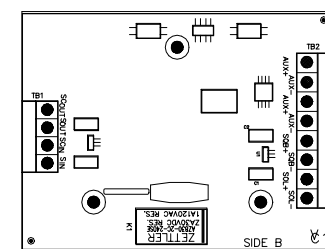
3.11 SUPERVISED OUTPUT MODULE, (SOM) P/N 55-021

The Supervised Output Module (SOM) is used to operate notification appliances. The SOM provides one, Class B circuit rated for 2.0 amps @ 24 VDC. The SOM maintains important operating parameters in nonvolatile RAM to ensure fast reliable operations.



3.12 SOLENOID RELEASING MODULE (SRM) P/N 55-022

The Solenoid Releasing Module (SRM) operates a wide variety of suppression systems including, Clean Agent, Carbon Dioxide, Watermist and Sprinkler Pre-action. The SRM can operate solenoids rated up to 2.0 amps @ 24 VDC or 12 VDC, or up to 6 Agent Release Modules. The SRM maintains important operating parameters in non-volatile RAM to ensure fast reliable operations. The SRM can also be programmed for City Tie Service. (NFPA 72 auxiliary)



3.13 DUAL RELAY MODULE (R2M) P/N 55-023

The Dual Relay Module, (R2M) provides two independently configured SPDT relays rated for 2 amp @ 24 VDC. The R2M maintains important operating parameters in non-volatile RAM to ensure fast reliable operations.

